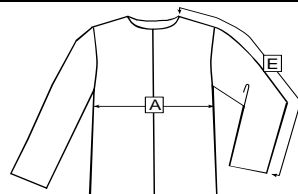


Masstabelle Jacke / size chart jacket



Artikelnr. / article:										
Bezeichnung / description:		Fire Recon Jacke								
		XS-0	S-0	M-0	L-0	XL-0	XXL-0	XXXL-0	XXXXL-0	
	body height	Körperhöhe	156-164	156-164	156-164	156-164	156-164	156-164	156-164	
	chest	Brustumfang	78-86	86-94	94-102	102-110	110-118	118-130	130-142	
A	jacket girth 5 cm below armhole	JU-Sunter-Armloch	104	112	120	128	136	144	152	
E	sleevelength from neck	Alg-ab-Halsloch	69	71	74	76	78	80	83	
	sleevelength from neck incl. Extensi	Alg-abHalsl-inklV	71	73	76	78	80	82	85	
B	jacket length center back	Jlg-hint-Mitte	66	66	66	66	66	66	66	
D	jacket length center back incl. Extensi	Jlg-hint-Mi-inklV	70	70	70	70	70	70	70	
		XS-1	S-1	M-1	L-1	XL-1	XXL-1	XXXL-1	XXXXL-1	
	body height	Körperhöhe	164-172	164-172	164-172	164-172	164-172	164-172	164-172	
	chest	Brustumfang	78-86	86-94	94-102	102-110	110-118	118-130	130-142	
A	jacket girth 5 cm below armhole	JU-Sunter-Armloch	104	112	120	128	136	144	152	
E	sleevelength from neck	Alg-ab-Halsloch	72	74	76	78	81	83	85	
	sleevelength from neck incl. Extensi	Alg-abHalsl-inklV	74	76	78	80	83	85	87	
B	jacket length center back	Jlg-hint-Mitte	69	69	69	69	69	69	69	
D	jacket length center back incl. Extensi	Jlg-hint-Mi-inklV	73	73	73	73	73	73	73	
		XS-2	S-2	M-2	L-2	XL-2	XXL-2	XXXL-2	XXXXL-2	
	body height	Körperhöhe	172-180	172-180	172-180	172-180	172-180	172-180	172-180	
	chest	Brustumfang	78-86	86-94	94-102	102-110	110-118	118-130	130-142	
A	jacket girth 5 cm below armhole	JU-Sunter-Armloch	104	112	120	128	136	144	152	
E	sleevelength from neck	Alg-ab-Halsloch	74	76	79	81	83	85	88	
	sleevelength from neck incl. Extensi	Alg-abHalsl-inklV	76	78	81	83	85	87	90	
B	jacket length center back	Jlg-hint-Mitte	72	72	72	72	72	72	72	
D	jacket length center back incl. Extensi	Jlg-hint-Mi-inklV	76	76	76	76	76	76	76	
		XS-3	S-3	M-3	L-3	XL-3	XXL-3	XXXL-3	XXXXL-3	
	body height	Körperhöhe	180-188	180-188	180-188	180-188	180-188	180-188	180-188	
	chest	Brustumfang	78-86	86-94	94-102	102-110	110-118	118-130	130-142	
A	jacket girth 5 cm below armhole	JU-Sunter-Armloch	104	112	120	128	136	144	152	
E	sleevelength from neck	Alg-ab-Halsloch	77	79	81	83	86	88	90	
	sleevelength from neck incl. Extensi	Alg-abHalsl-inklV	79	81	83	85	88	90	92	
B	jacket length center back	Jlg-hint-Mitte	75	75	75	75	75	75	75	
D	jacket length center back incl. Extensi	Jlg-hint-Mi-inklV	79	79	79	79	79	79	79	
		XS-4	S-4	M-4	L-4	XL-4	XXL-4	XXXL-4	XXXXL-4	
	body height	Körperhöhe	188-196	188-196	188-196	188-196	188-196	188-196	188-196	
	chest	Brustumfang	78-86	86-94	94-102	102-110	110-118	118-130	130-142	
A	jacket girth 5 cm below armhole	JU-Sunter-Armloch	104	112	120	128	136	144	152	
E	sleevelength from neck	Alg-ab-Halsloch	79	81	84	86	88	90	93	
	sleevelength from neck incl. Extensi	Alg-abHalsl-inklV	81	83	86	88	90	92	95	
B	jacket length center back	Jlg-hint-Mitte	78	78	78	78	78	78	78	
D	jacket length center back incl. Extensi	Jlg-hint-Mi-inklV	82	82	82	82	82	82	82	
		XS-5	S-5	M-5	L-5	XL-5	XXL-5	XXXL-5	XXXXL-5	
	body height	Körperhöhe	196-204	196-204	196-204	196-204	196-204	196-204	196-204	
	chest	Brustumfang	78-86	86-94	94-102	102-110	110-118	118-130	130-142	
A	jacket girth 5 cm below armhole	JU-Sunter-Armloch	104	112	120	128	136	144	152	
E	sleevelength from neck	Alg-ab-Halsloch	82	84	86	88	91	93	95	
	sleevelength from neck incl. Extensi	Alg-abHalsl-inklV	84	86	88	90	93	95	97	
B	jacket length center back	Jlg-hint-Mitte	81	81	81	81	81	81	81	
D	jacket length center back incl. Extensi	Jlg-hint-Mi-inklV	85	85	85	85	85	85	85	
		XS-6	S-6	M-6	L-6	XL-6	XXL-6	XXXL-6	XXXXL-6	
	body height	Körperhöhe	204-212	204-212	204-212	204-212	204-212	204-212	204-212	
	chest	Brustumfang	78-86	86-94	94-102	102-110	110-118	118-130	130-142	
A	jacket girth 5 cm below armhole	JU-Sunter-Armloch	104	112	120	128	136	144	152	
E	sleevelength from neck	Alg-ab-Halsloch	84	86	89	91	93	95	98	
	sleevelength from neck incl. Extensi	Alg-abHalsl-inklV	86	88	91	93	95	97	100	
B	jacket length center back	Jlg-hint-Mitte	84	84	84	84	84	84	84	
D	jacket length center back incl. Extensi	Jlg-hint-Mi-inklV	88	88	88	88	88	88	88	



A-E: Fertigmasse / Ready measurements

Toleranz / Tolerance +/- 2cm



Änderungen und Druckfehler vorbehalten.
Typesetting errors, misprints and modifications reserved.

TEXPORT® Handelsgesellschaft m.b.H., Franz-Sauer-Straße 30, A - 5020 Salzburg,
Österreich,
Tel. +43-(0)662-423244, Fax. +43-(0)662-423244, office@texport.at, www.texport.at